

260 N Rock Rd – Wichita KS FOR SALE or LEASE

Located between Rock Rd, Douglas Avenue, and Central Avenue



Building Size 21,560 square feet on two floors
with flexible spaces and ample parking

Great location on one of Wichita's busiest corridors

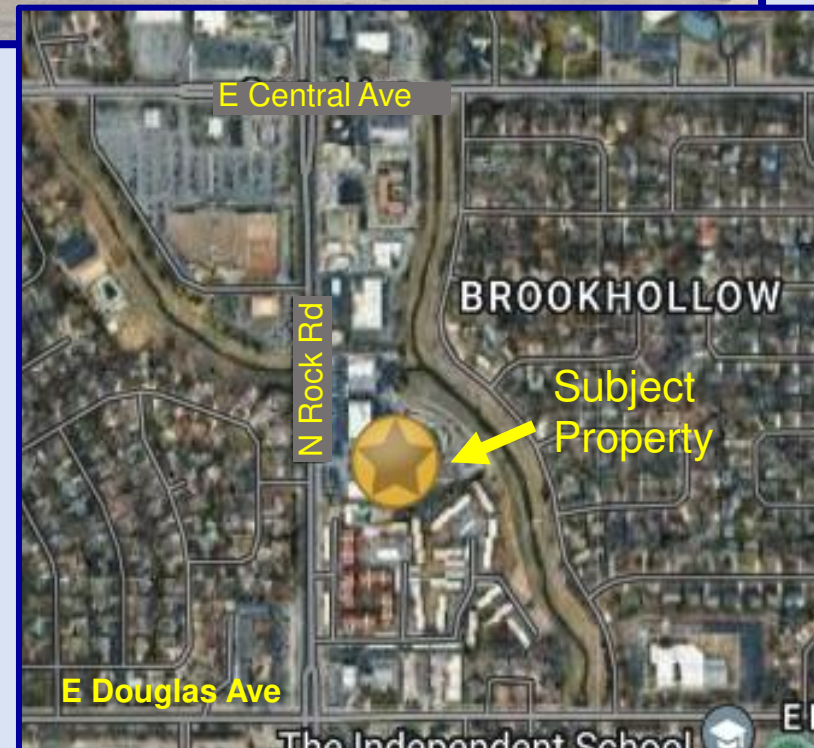
Sales Price \$2,587,200

Lease Rate: \$16 psf, Full Service

Craig Ablah (316) 734-1148

craig@classicrealestate.net

8110 E 32nd Str N #150 Wichita, KS 67226 (316) 634-2600



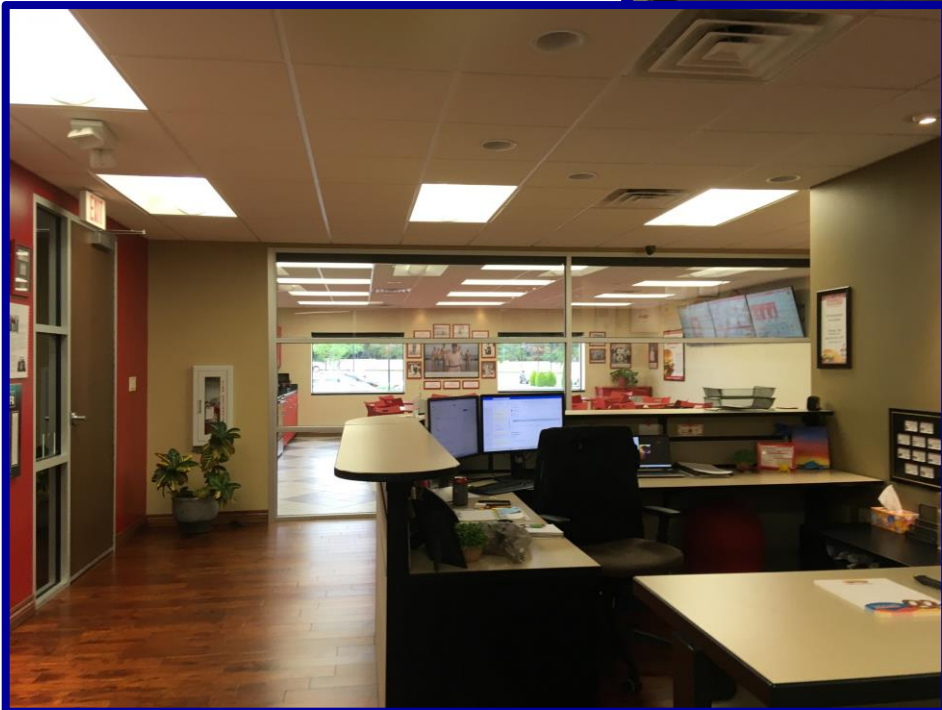
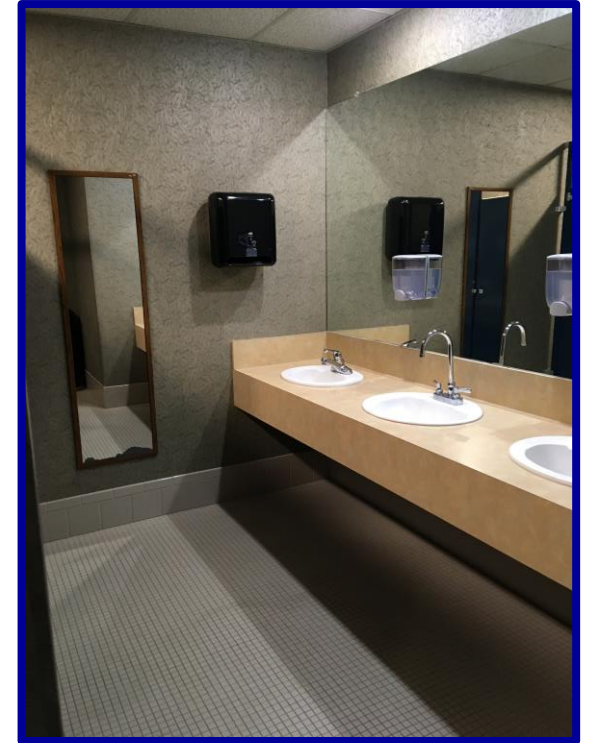
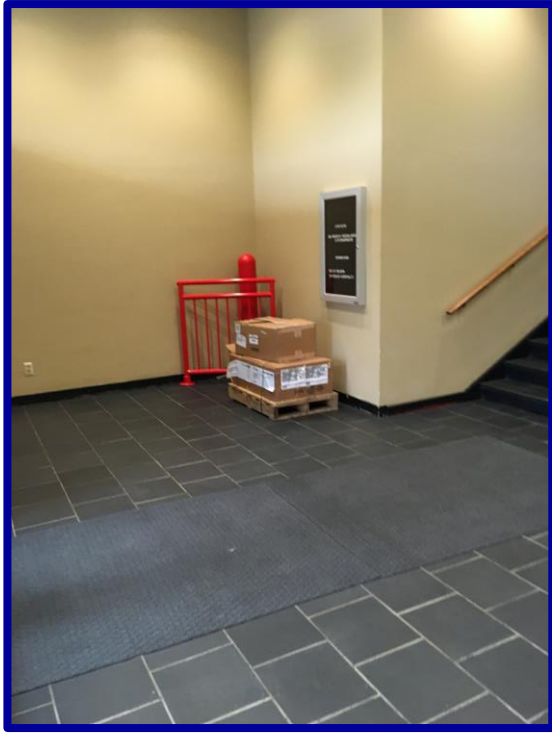
260 N Rock Rd - Wichita KS

Located between Rock Rd, Douglas Avenue, and Central Avenue



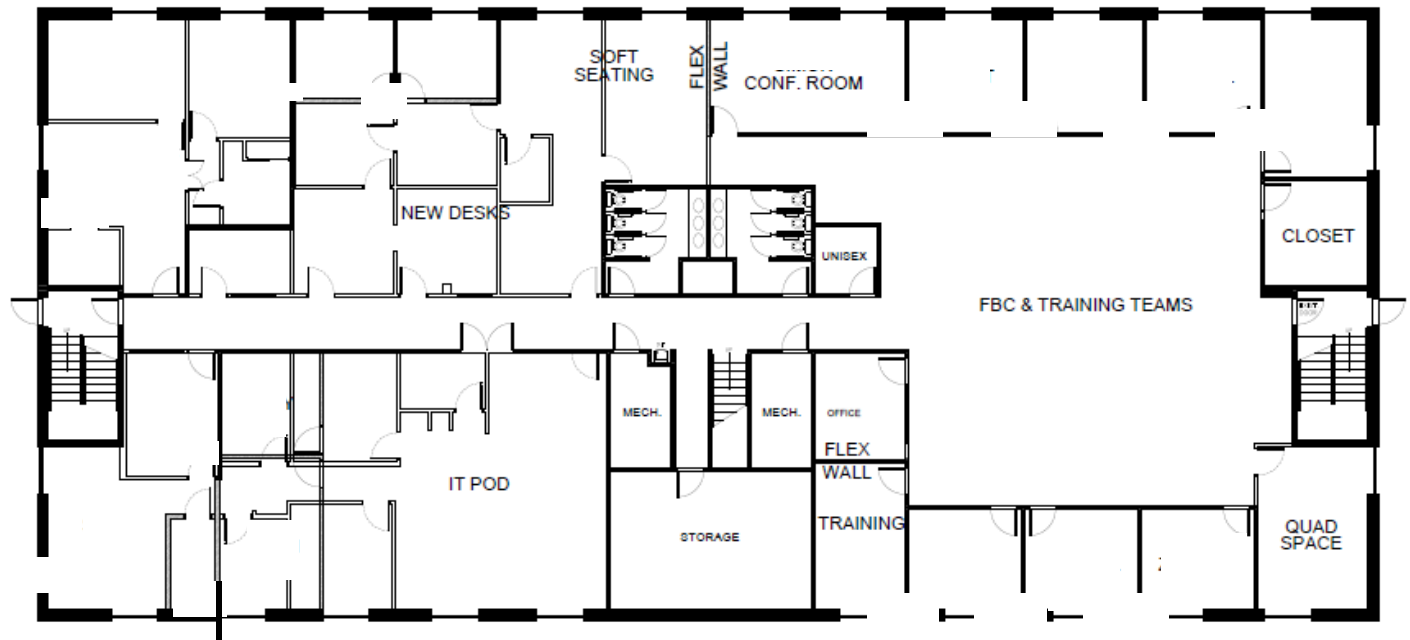
2 minutes from Towne East Mall ♦ 5 minutes from Eastgate ♦ 8 minutes from East Kellogg Dr
♦ 10 minutes from Beech Textron
2020 census population for 5 mile radius 169,847

260 N Rock Rd Wichita KS



260 N Rock Rd
Wichita KS

Floorplans



A FIRST FLOOR PLAN
3/19 - 1/21



A SECOND FLOOR PLAN
3/19 - 1/21



Craig Ablah (316) 734-1148
craig@classicrealestate.net

260 N Rock Road Building and Parking

